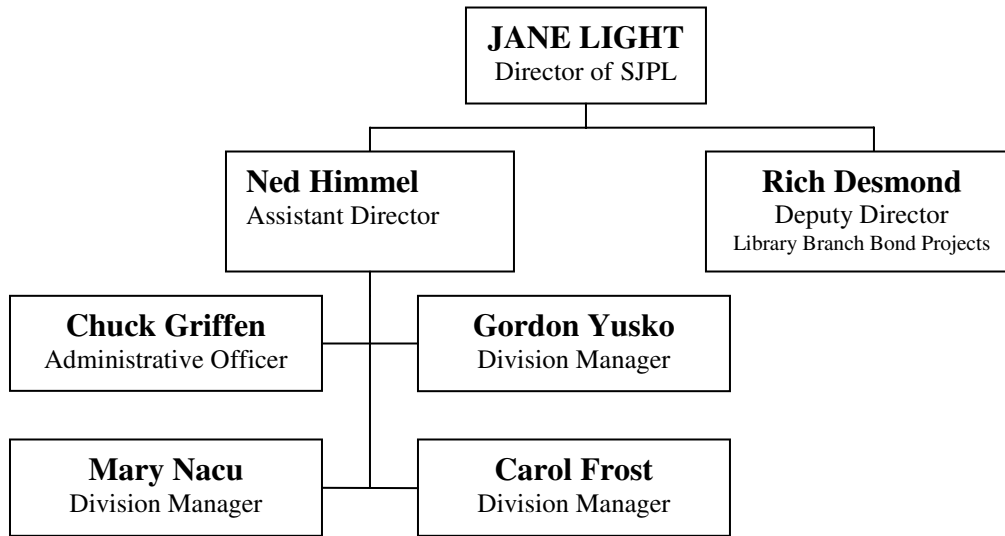


# San Jose Public Library at a glance – October, 2008



## CORE SERVICES:

Provide Access To Information, Library Materials, and Digital Resources

Promote Lifelong Learning and Provide Educational Support

## FUNDING SOURCES:

### OPERATING (36.0%)

**General Fund**  
(\$29.6 M = 87% Oper)  
and  
**Library Parcel Tax**  
(\$4.4 M = 13% Oper)

### CAPITAL/NON-BOND (6%)

**Libr Constr/Conveyance Tax**  
(\$3.0 M = 52% CIP)  
and  
**Library Parcel Tax**  
(\$2.8 M = 48% CIP)

### CAPITAL/BOND (58%)

**Branch Bond Fund**  
(\$54.0 M)

## DISTRIBUTION OF OPERATING FUNDS:

**Personal Services**  
(\$28.2 Million = 83% Operating)

**Non-Personal Services**  
(\$5.7 Million = 17% Operating)

## STAFFING (~366 FTE):

**210 FTE located at 17 branches currently**  
**156 FTE located at King Library, including**  
26 FTE in administration and management  
130 FTE in KL and system-wide support  
**4 FTE located at CH for branch bond program**

